



SOUTH PACIFIC APPLIED GEOSCIENCE COMMISSION

&

WORLD HEALTH ORGANIZATION

WATER SAFETY PLANS
REPUBLIC OF PALAU SCOPING MISSION

ROUNDTABLE MEETING

Friday 9 June 2006

EQPB conference room

Findings: Water Supply Situation



- Potentially two approaches for WSP introduction: reticulated and individual household systems
 - Koror-Airai and other reticulated systems (e.g. Babeldaob)
 - Community / household drinking water supplies
- WSP programme could provide good example for new water supply developments (Melekeok, Tabecheding etc)
- WSP programme could strengthen the community-based management and awareness programmes for small community systems and individual household catchments
- Need to have more consultation with communities esp. in outer islands – in the course of planning WSP project activities and tools

Findings: Potential approach



- There is good scope for a reticulated WSP project using Koror-Airai system as pilot
- Water Supply system operations and reliability could benefit from WSPs
- Strong interest and commitment from Bureau of Public Works, EQPB and MoH (Division of Public Health) a.o.
- Consensus among the stakeholders on the chair of the National Steering Committee
- Interest in actual implementation of the plan and funding for Improvement Schedule
- Simple, consistent, standard tools and products are needed for use for community and Household awareness (*mainly in English and perhaps to be translated into Palauan language*)

Findings: Partnerships



- Link to existing programmes and efforts such as Watershed Management activities and Alliances (PCS, TNC, NRCS)
- Community-Based Monitoring (Ministry of Health)
- Water Quality Monitoring could be expanded to include source water (EQPB, BPW)
- Awareness Programmes (MoH, EQPB, NGOs)
- Capacity Building / training support (PCC/OMIP)
- Areas could be identified where other programmes e.g. Water Quality Monitoring Capacity Building Programme (SOPAC/IAS/WHO) and the Water Demand Management Programme (SOPAC/PWA) could provide support
- Make use of GIS Palaris (L&S)

Findings: Sustainability



- WSP could be integrated into relevant National Plans (e.g. Land-use Plans, Watershed Management Plans, Sustainable Development Plans)
- WSP to be included in national legislation e.g. National Building Code, Forestry legislation (buffer zones)
- Strengthened partnership between agencies
- Involvement of communities, NGOs, CBOs
- Political support (Congress approval)

Findings: Replicability



National

- BPW and Palau Community College could support potential replicability of WSP concept to other States in Palau building on Operation and Maintenance Improvement Programme (OMIP);
 - MoH/EQPB to assist in replicability of reticulated and individual household systems

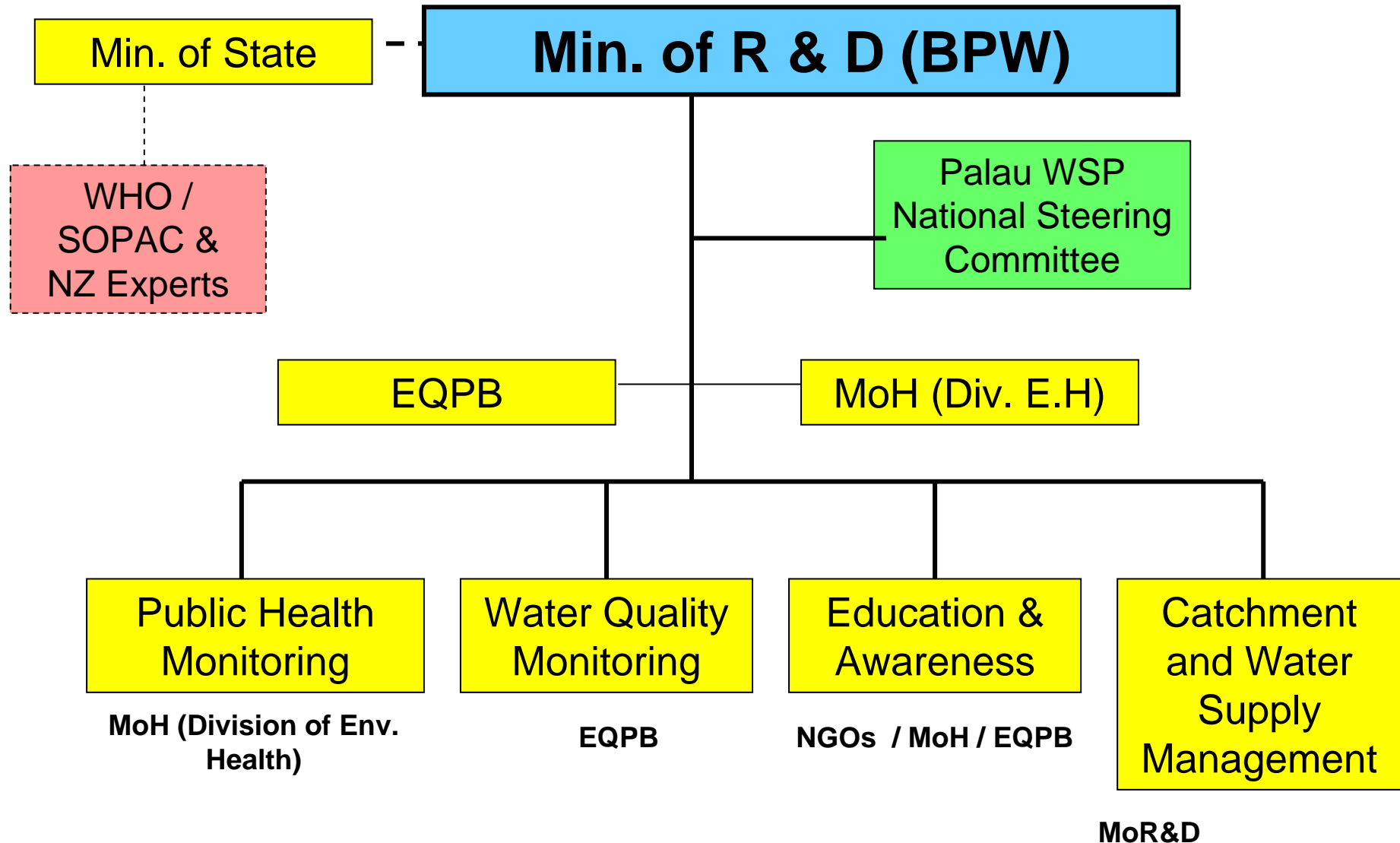
Subregional

- USEPA could be involved to support WSP activities in Palau as well as drive the replication process to benefit other countries in the Northern Pacific
- The Northern Pacific Environmental Health Association could also support the replication process

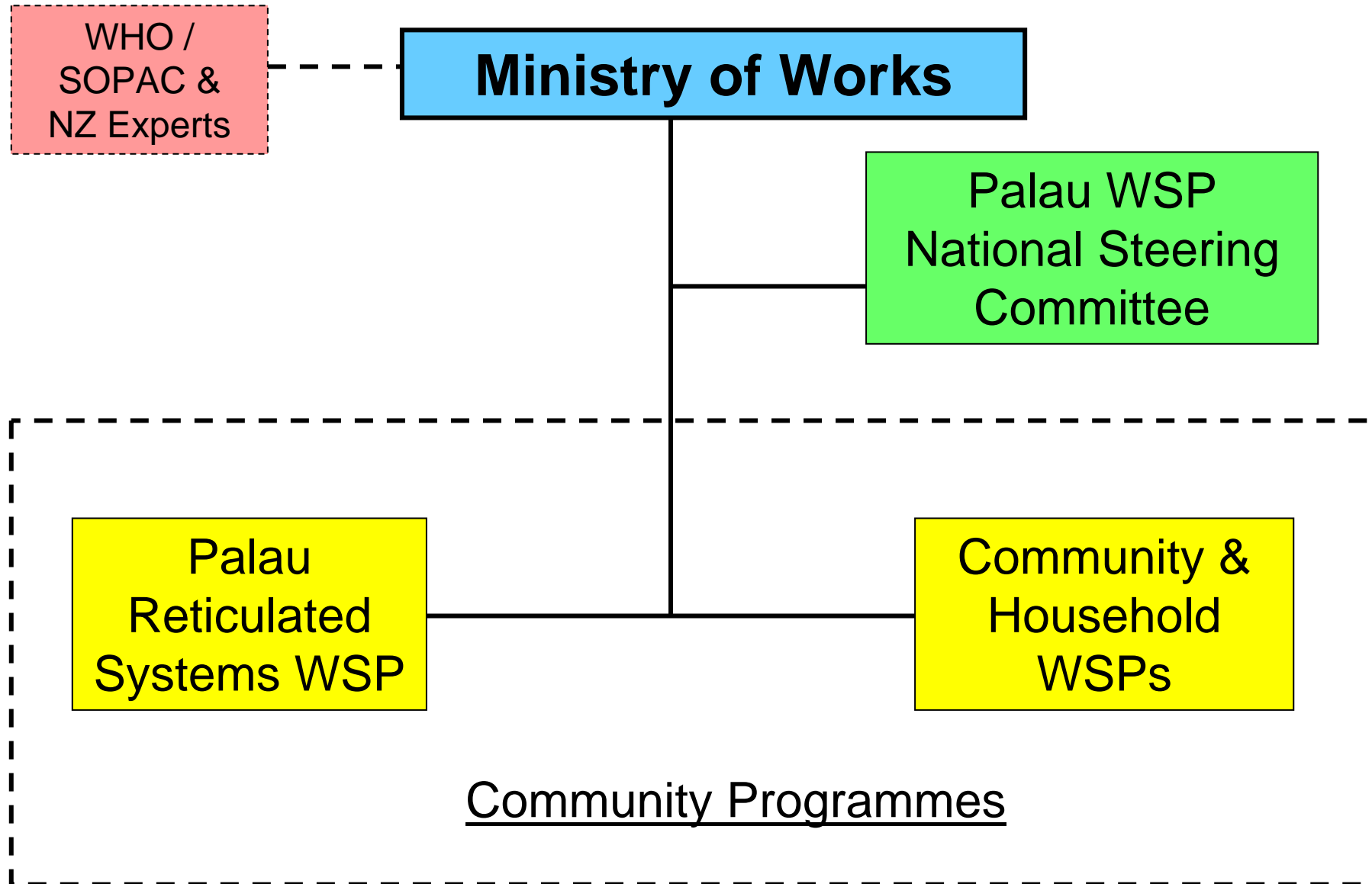
Agencies recap potential role:

Agency	Current Programmes	Capacity	Interest	Potential Role
Bureau of Public Works	Water Resources, Supply & Treatment	Water supply management	Improve water quantity and quality	Lead implementing agency
Ministry of Health	Health Monitoring Surveillance Awareness	Public Health Inspectors	Improve water quality	Implementing agency
EQPB	Water Quality Monitoring Regulation	Drinking Water Quality Monitoring and surveillance, permitting, Lab	Improved, more coordinated monitoring	Implementing agency
Lands & Survey PALARIS	Land-use plans GIS System established	Land-use planning, resource management / development	Linkages to National GIS	Key Partner
NGOs / PCS / TNC / NRCS	Watershed Management and Community Alliances, Awareness and Participation	Community Development & Awareness, Community Liaison / facilitation	Community Mobilization, Facilitation, Awareness	Key Partners

Possible WSP Project Structure



Two potential approaches for WSP introduction

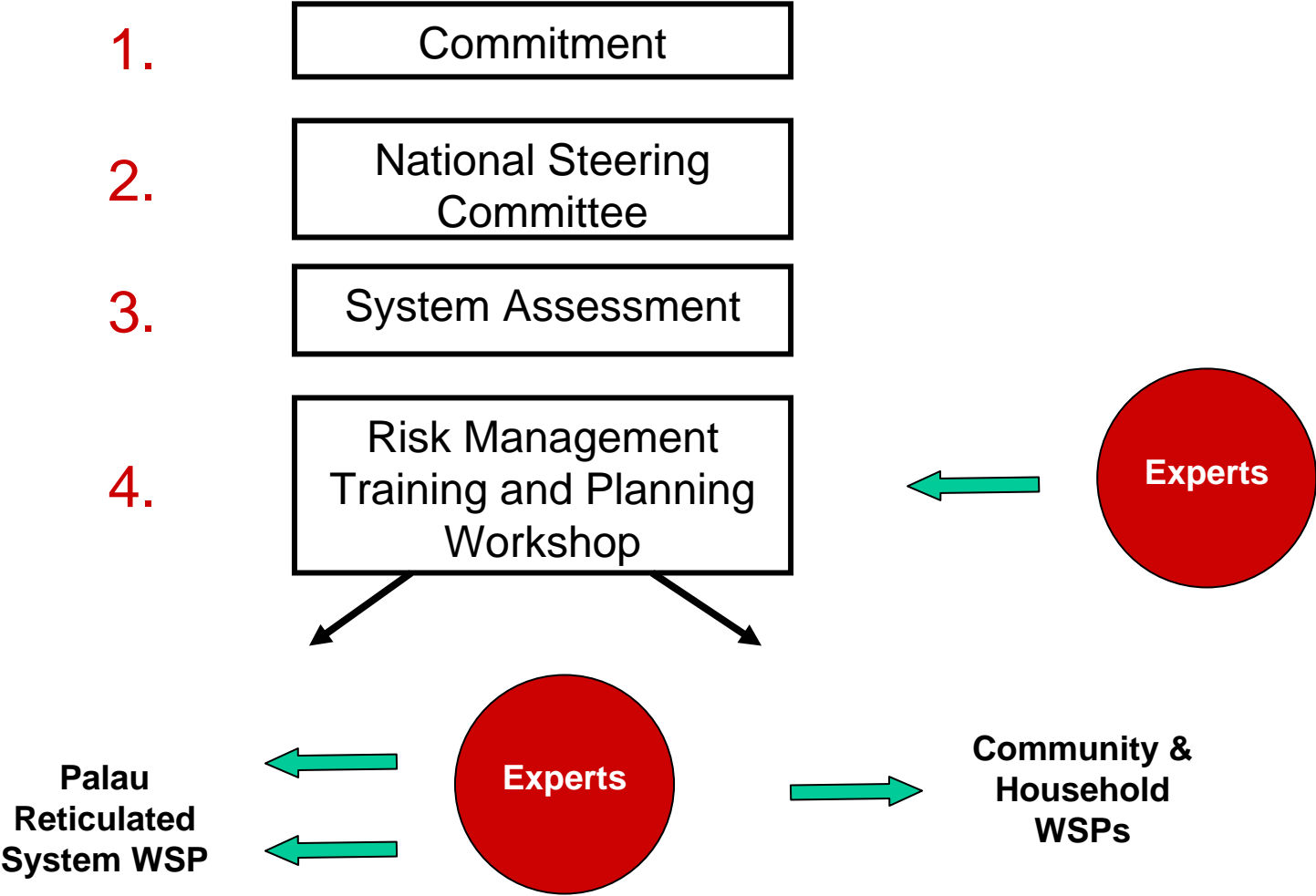


Possible products and outputs:



- The WSP Steering Committee could develop into a 'National Water Committee' in future
- Risk assessment / management system to ensure safe water quality
- EQPB Laboratory Capacity could be strengthened to include source water monitoring
- Development and Documentation of SOP's and risk management plan(s)
- Contingency / emergency procedures and/or plans established
- Support zoning of catchment (or land-use plans)
- Strengthen H₂S test production / recycling arrangements and awareness activities
- Community awareness package incl. Development and production of materials
- incl. School programmes and informal education in WSP activities e.g. in school curriculum

Possible immediate steps:



Possible activities



- Consider workshop to train and plan for WSP project
- Begin preparations for workshop on risk assessment / management training and planning (proposed objectives, programme, participants, experts, venue, budget, logistics) by BPW / National Steering Committee
- Water supply system description, assessment and risk analysis by BPW using WSP worksheets
- H₂S Test production / recycling arrangements by EQPB / MoH

National WSP Steering Committee



Possible Composition:

Ministry of State

Min. of R & D (Bureau of Public Works)

Ministry of Health (Division of Environmental Health)

Environmental Quality Protection Board (EQPB)

Rep designated by Congress

NGOs & CBOs (PCS, The Nature Conservancy, NRCS/USDA, others?)

Senator Santy Asanuma - Communities Representative

As required:

National Emergency Management Office (NEMO)

Bureau of Lands and Survey

Bureau of Agriculture

Bureau of Marine Resources

PALARIS

National WSP Steering Committee



Possible Terms of Reference:

Role: Guide the implementation of the National WSP activities, make decisions and ensure inter-agency cooperation

- Guide WSP national activities
- Ensure sharing of information among related authorities and projects
- Oversight of international and local inputs and resources
- Ensure sustainability of the programme through replication and support

Commitment required



- **Bureau of Public Works and other agencies (time, effort) and players (who?)**

- **Project support from WHO/SOPAC programme**
 - WHO/SOPAC Project Officers & advisors
 - NZ MoH / USEPA Experts
 - Training & Capacity Building
 - Development of Tools (e.g. IEC Material development, equipment etc)
 - On-going support to assist in development and implementation of WSPs
 - Potential support through Water Quality Monitoring Programme (improvement schedule)

- **Endorsement from Palau SOPAC National Representative**